

With over 20 years of experience, Mindray hosts a wide range of ultrasound imaging solutions including cart-based and portable systems. Being exported to over 190 countries, Mindray ultrasound systems are today being used by medical professionals for general as well as highly dedicated clinical utility. With a global R&D base spanning over Asia, Europe and America, the ultrasound solutions by Mindray are a result of an integral cooperation with the medical community, allowing for the ultrasound systems to be extremely user centric in terms of performance and usability. Mindray is well positioned to become one of the leading ultrasound imaging solutions provider.



DC-40

Diagnostic Ultrasound System

**Scanning with
Exceptional Capability**

Mindray Building, Keji 12th Road South,
High-tech Industrial Park, Nanshan, Shenzhen 518057, P.R. China
Tel: +86 755 8188 8998 Fax: +86 755 26582680
E-mail: intl-market@mindray.com www.mindray.com

mindray | healthcare within reach are registered trademarks or trademarks owned by Shenzhen Mindray Bio-medical Electronics Co., LTD.
© 2015 Shenzhen Mindray Bio-Medical Electronics Co., Ltd. All rights reserved. Specifications subject to changes without prior notice.
P/N:ENG-DC-40-210285X8P-20160504

mindray

mindray
healthcare within reach

To deliver on the promise of quality health care within reach, Mindray introduces the new generation of shared service ultrasound DC-40. Mindray breaks down the barriers through innovative technology with a wide range of clinical applications. Combining full application packages, auto-measurement tools, and onboard education software, the DC-40 makes ultrasound scanning accurate, efficient and accessible with exceptional capability. Mindray understands the requirements for an optimal operative experience. The 10.4" touch screen guarantees ease-of-use and helps reduce the daily work burden, while the compact design and built-in battery ensures maximum mobility.

System highlights:

Up to 15 transducers for a wide variety of applications

Advanced 4D capability with iLive and iPage

- iLive: realistic rendering mode of fetal 4D images
- iPage: slice display of 4D volume image with user selectable thickness

Designed with compact cart and battery for high mobility

More clinical features to serve in different clinical scenarios

- Smart OB and Smart NT for a smart obstetrics diagnosis
- Natural Touch Elastography evaluates tissue stiffness to help distinguish benign and malignant mass
- Auto IMT measurement facilitates fast and reliable carotid analysis
- TDI & TDI QA and Free Xros CM for comprehensive cardiac evaluation



Enhanced diagnostic confidence for you

Benefitting from technology migrated from established ultrasound systems, the DC-40 guarantees exceptional image quality. Powered by imaging technologies including iClear, iBeam, PSH and the wide range transducer family, the DC-40 is a practical machine for confident scanning.

Wide range transducers and applications

With up to 15 transducers, the DC-40 offers the best balanced performance across a wide range of applications, and produces advanced image quality in a wide variety of patient types. The broadest range of transducers and shared services capabilities facilitates extensive exams:

- Abdominal
- Obstetrical & Gynecological
- Small parts
- Cardiac
- Vascular
- Musculoskeletal
- Urological
- Pediatric
- Transcranial

iClear

iClear speckle-reduction imaging technology reduces the image speckle noise and acquires clearer and sharper lesion contours.

PSH

Phase Shift Harmonic imaging (PSH), also known as purified harmonic imaging, plays an important role in reducing noise while preserving tissue definition and resolution.

iBeam

iBeam spatial-compounding imaging technology permits use of multiple transmitting angles to form a single image, resulting in enhanced contrast resolution and improved visualization.

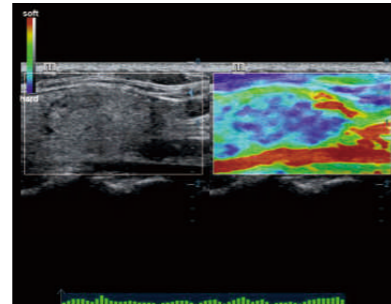


Exceptional capability for you

The DC-40 delivers a range of tools that maximize diagnostic accuracy. Covering general imaging, OB/GYN and Cardiology, the DC-40 provides complete solutions including Natural Touch Elastography, advanced 4D imaging with iLive & iPage, Auto IMT, UWN Contrast Imaging, TDI & TDI QA, Free Xros M and Free Xros CM.

Natural Touch Elastography

Based on Mindray's exclusive technology, Natural Touch Elastography reduces dependence on user operation technique, improving reproducibility for increased clinical utility.

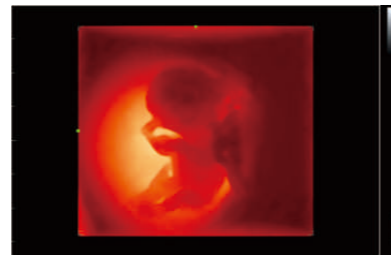


Thyroid Nodule with Elastography

iLive™

(Realistic 4D rendering imaging)

Integrating a ray-casting algorithm with a new virtual lighting modality, iLive generates amazingly realistic view of the fetus with human skin-like images.



Fetus with iLive

Auto IMT

(Intima Media Thickness)

Auto IMT automatically detects and calculates the thickness of carotid intima. With comprehensive IMT report, auto IMT facilitates an accurate and efficient evaluation of carotid condition.

Smart OB

(Automatic measurement for OB items)

Accurate auto measurements of most frequently examined fetal parameters including BPD, OFD, HC, AC and FL.

UWN Contrast Imaging

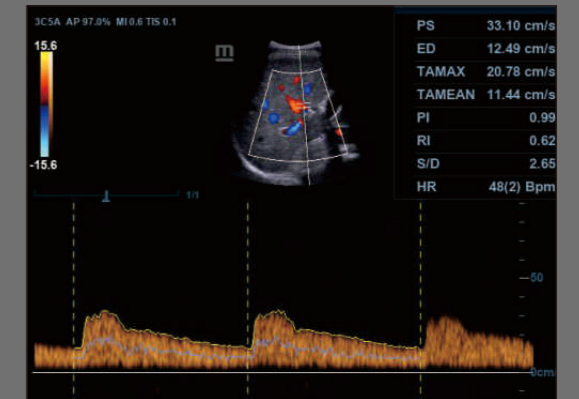
Mindray's unique contrast imaging technology, utilizing contrast agent characteristics with both 2nd harmonic and non-linear fundamental signal to get an improved S/N ratio for better diagnostic details and longer contrast agent duration for improved observation.

TDI & TDI QA

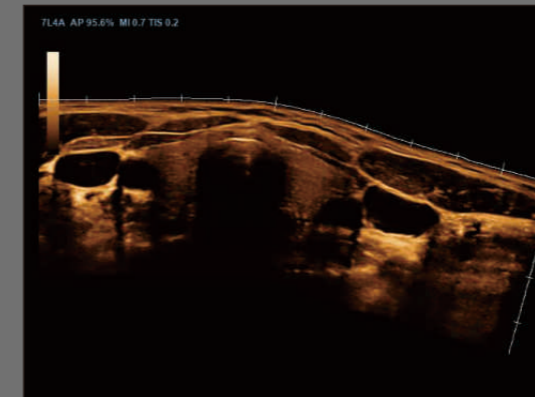
The Tissue Doppler Imaging (TDI) allows you to quantitatively evaluate local myocardial movement and function, with quantitative velocity parameter in TDI QA.



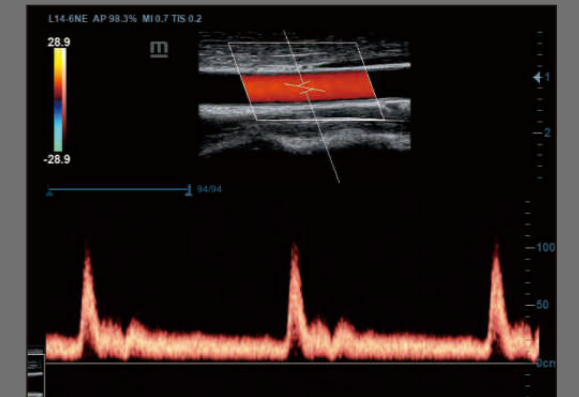
Morison's Pouch



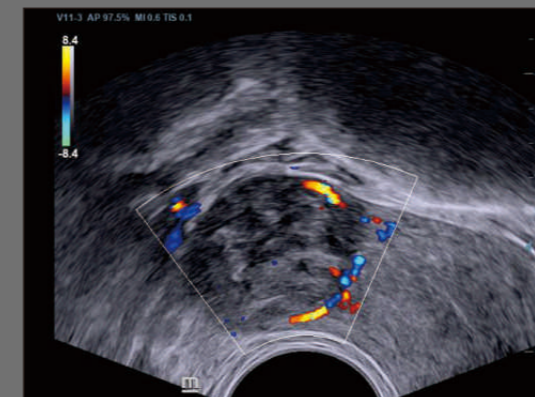
PW of Liver Artery



iScape of Thyroid



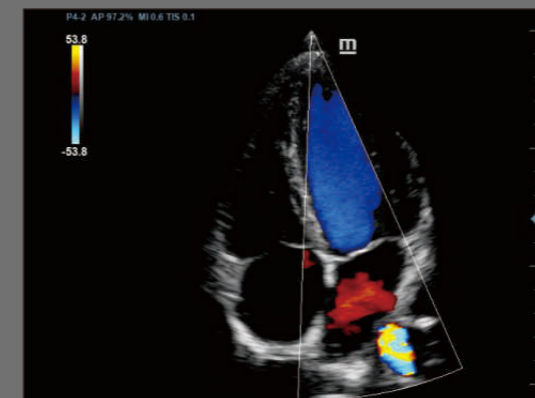
PW of Common Carotid Artery



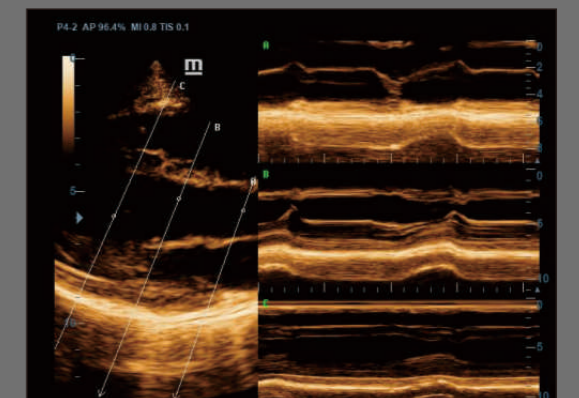
Color Flow of Uterus Mass



3D of Fetal Spine



Color Flow of Apical View



Anatomy M Mode of Long Axis

Increased efficiency for you



Wide selection of application-specific exam planes

- Plane packages covering various applications: Abdomen, OB/GYN, Thyroid, Breast, Testicle
- Including different (multiple) image modes

Anatomical illustrations

- Normal anatomical illustrations including schematic and ultrasound pictures
- Side display of standard ultrasonogram providing visual guidance on the region of interest

Standard ultrasound images

- Real-time scanning comparison for your reference

Scanning reference pictures

- Correct patient position and probe placement demonstration

Tips on scanning and diagnosing

iScanHelper

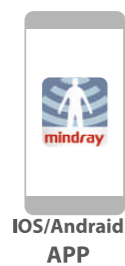
(Inbuilt Tutorial Module)

With iScanHelper, practitioners can learn basic scanning knowledge with the operation technique, standard planes, and anatomical information.

MedSight™

(Mobile device App for image transferring)

MedSight lets you transfer clinical images and cines to your smart device via an interactive app. This is ideal for a mother-to-be wanting to share the images of the fetus with her family or friends; or for a training session or a discussion with your peers on a rare case. With MedSight you can now take the clinical examinations with you wherever needed.



IOS/Andraid APP



Image/Cine

Auto Measure

Application-specific auto-measurement packages include Auto IMT, Auto LV, auto PW trace & calculation, Smart OB and Smart NT, all reducing repetitive steps and button pushes, thus making diagnosis in a smart way.

Raw Data

Clinicians now have the freedom to perform image adjustments, measurements and other functions after the exam is completed using recorded data.

Ergonomics



15"/17" LED monitor with 180°rotational angle

10.4" touch screen with adjustable angle

Gel warmer

DVD-RW drive and USB ports

Rotatable and height adjustable control panel

Dedicated endocavity transducer holder

Retractable QWERTY keyboard

Built-in battery supporting real-time scanning

Cable management design

4 active transducer sockets